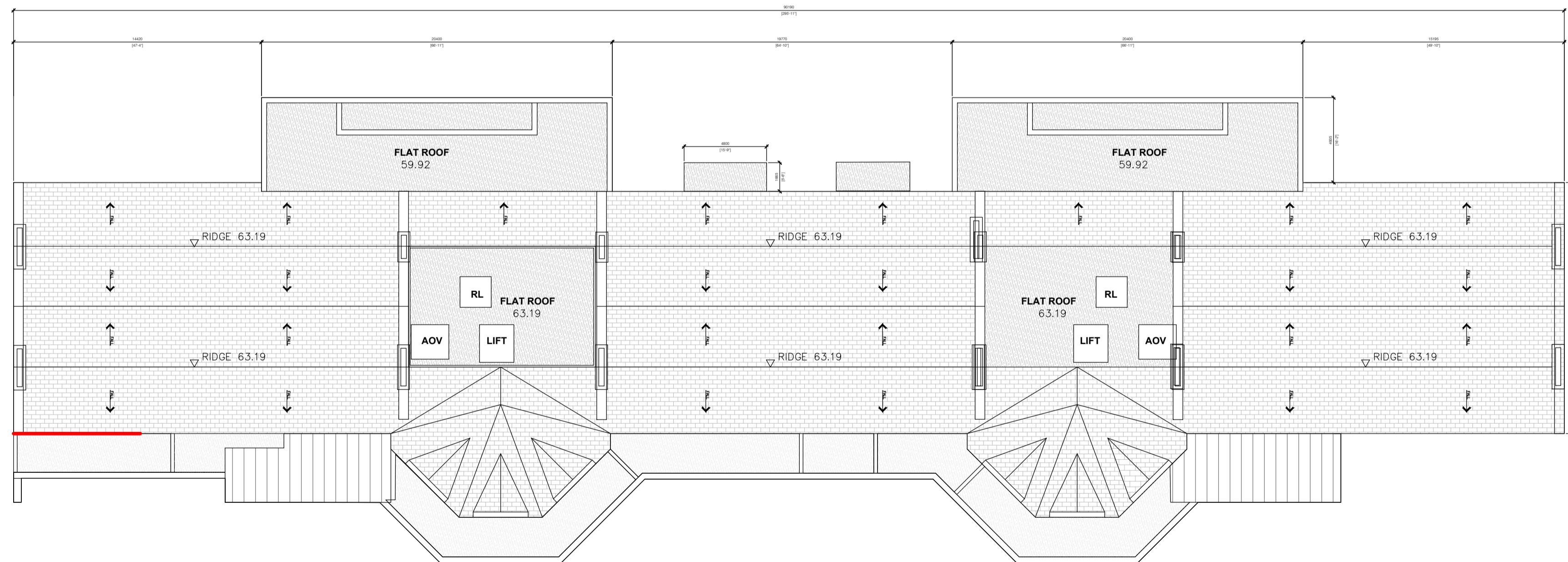




1 L03-Third Floor Plan - St. Kevin's Apartments
1:200 **NO CHANGE**



1 RF-Roof Plan - St. Kevin's Apartments
1:200 **NO CHANGE**

ORIGINAL SHEET SIZE = A1

DO NOT SCALE FROM THIS DRAWING. USE FIGURED DIMENSIONS IN ALL CASES. VERIFY DIMENSIONS ON SITE AND REPORT ANY DISCREPANCIES TO THE ARCHITECT IMMEDIATELY. THIS DRAWING IS TO BE READ IN CONJUNCTION WITH THE ARCHITECT'S SPECIFICATION. © THIS DRAWING IS COPYRIGHT AND MAY ONLY BE REPRODUCED WITH THE ARCHITECT'S PERMISSION.

REV	DATE	BY	CHKD	REASON

- NOTES**
- Legend**
- EXISTING STRUCTURE RETAINED
 - NEW PARTY WALLS
 - 1 BEDRM.
 - 2 BEDRM.
 - CRECHE
 - PLANT ROOM

Apartment Scheme

Ground Floor	15 units	● Dual Aspect Unit
First Floor	17 units	■ Total No. of 1 Bedrm. Units = 30 Units
Second Floor	17 units	■ Total No. of 2 Bedrm. Units = 36 Units
Third Floor	17 units	
Total =	66 Units	Total No. of Dual Aspect Units = 48 Units
Total Floor area	5943sq.m.	Total No. of Single Aspect South facing units = 18 Units

JOB

St. Kevin's Residential Development
at the former St. Kevin's Hospital and Grounds
Shanakiel, Cork

CLIENT

Land Development Agency

PLANNING

DRAWING

St. Kevin's Apartment
L03 and RF GA Plans

DATE	27.10.2023	SCALE	1:200 (A1)
DRAWN	A. O'Sullivan	REVISION	P02
CHECKED	P. Mahigan		
DWG NUMBER	SKC -RAU-SK-XX-DR-A-1712		

Reddy Architecture + Urbanism
Cork Office
Douglas Business Centre, Carrigaline Road, Douglas, Co. Cork

T: +353 (0)21 4362922
W: www.reddyarchitecture.com
E: cork@reddyarchitecture.com

